



A



B



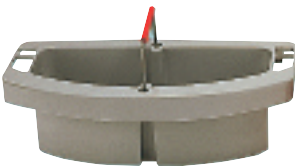
C



D



E



F



G



**CLEANING CARTS**

Compact footprint—only 22" wide for easy mobility inside tight spaces. Superior tool organization: innovative rubber tool grips hold mop and broom handles at any position (up to 1 1/8" dia.) and includes holders for lobby dust pan and commercial upright vacuum. Comfort Grip cart handle provides easy maneuverability. 8" wheels and 4" quiet casters are ideal for noise-sensitive environments. Nonrusting, easy-to-clean aluminum and structural web plastic construction. Black.

**A. Healthcare Microfiber Cleaning Cart**

Designed to work with Rubbermaid® microfiber cleaning accessories. Dual-access, locking security hood and doors keep cleaning supplies concealed from view; single key (incl.) unlocks both. Waste cover with storage compartment for supplies. Lock 'n Go Connection keeps a Microfiber Disinfecting Bucket (sold separately) securely attached to the cart. Integrated holders for up to four safety signs. Includes zippered 33-gal. vinyl bag and two removable 10-quart disinfecting caddies. JCAHO Compliant. 22w x 48 1/4d x 53 1/2h. Shpg. wt. 74 lbs.

RCP 9T75 **Each**

**B. Microfiber Disinfecting Cart**

Designed to work with Rubbermaid® microfiber cleaning accessories. Slide-out bins are easily accessible from both sides of the cart. Fold-out platform with Lock 'n Go Connection keeps a Microfiber Disinfecting Bucket (sold separately) securely attached to the cart. Features storage for microfiber frames, integrated holders and up to four safety signs. Includes zippered 33-gal. vinyl bag, two 10-quart disinfecting caddies and two removable 30-quart storage bins. 22w x 48 1/4d x 44h. Shpg. wt. 53 lbs.

RCP 9T73 **Each**

**C. HYGEN™ High-Capacity Cleaning Cart**

Lock 'n Go Connection keeps a Microfiber Disinfecting Bucket (sold separately) securely attached to the cart. Integrated holders for up to four safety signs. Includes zippered 33-gal. vinyl bag and two removable 10-quart disinfecting caddies. 22w x 49 1/4d x 44h. Shpg. wt. 45 lbs.

RCP 9T72 **Each**

**D. Triple-Capacity Cleaning Cart**

Use with high-capacity bags (sold separately) to provide multi-stream waste sortation for efficient, cost-effective recycling. 22w x 51 1/4d x 44h. Shpg. wt. 40.5 lbs.

RCP 9T92 **Each**

**Recycling Bags**—For Triple-Capacity Cleaning Cart RCP 9T92. Bags feature universal recycling symbol. Set of three bags includes one each of red, green and blue.

RCP 9T93-01 **Set**

**JANITOR CART**

**E.** Designed with innovative features to improve staff efficiency: increased storage capacity; three shelves for supplies; hooks and holders for mop handles, broom handles and lobby dust pan; paper towel holder and zippered 25-gallon vinyl bag. Wire form holder keeps polyliner secure. Platform holds a 32-gallon container, standard-size bucket or Microfiber Mop Buckets RCP Q950 and RCP Q900-88 (not incl.). Nonmarking 8" rear wheels and 4" nonmarking casters. Black. 21 1/4w x 46d x 38 3/4h. Shpg. wt. 36 lbs.

RCP 6173-88 BLA **Each**

**High-Capacity Replacement Vinyl Bag**—For Janitor Carts RCP 9T75, RCP 9T73, RCP 9T92, RCP 9T72, or RCP 6173-88. Water- and leak-proof bag with pleated sides. 33-gal. capacity. Yellow. 2 bags per pack.

RCP 9T80 YEL **Pack**

**F. Maid Carry Caddy**

All-purpose caddy for carrying cleaning supplies or tools. Snaps onto rim of 44-gallon Brute® containers RCP 2643 and RCP 2643-60 (sold separately). Gray. 16w x 9d x 5h.

RCP 2649 GRA **Each**

**G. Deluxe Carry Caddy**

Higher side walls securely hold up to eight 32-oz. commercial spray bottles. Molded-in divider and small item holder for better organization. Ergonomic handle for comfort. Black. 10.9w x 15d x 7.4h.

RCP 3154-88 BLA **Each**